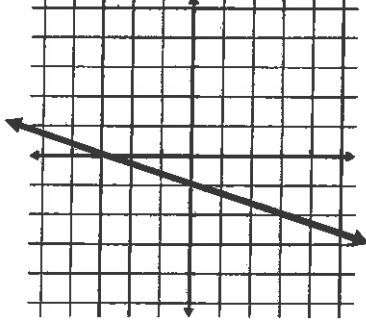


# Finding Intercepts

X-Intercept: Identify the point where the graph crosses the x-axis.

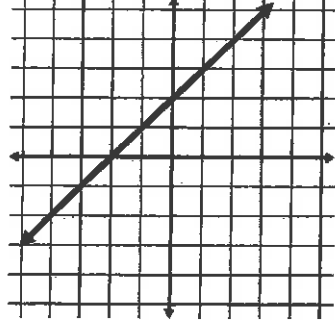
Y-Intercept: Identify the point where the graph crosses the y-axis.



$$y = -x + 2$$

X-Intercept: Plug in 0 for y. Solve for x.

Y-Intercept: Plug in 0 for x. Solve for y.



$$5x - 2y = 30$$

X-Intercept: Find the value in the table where y is 0.

Y-Intercept: Find the value in the table where x is 0.

x	y
-3	0
3	1
6	2
9	3

x	y
12	-6
8	-3
4	0
0	3

**Remove This Flap**

---

**From a  
Graph**

---

**From an  
Equation**

---

**From a  
Table**