

Finding Slope

Mark the points where the graph crosses the grid lines exactly.

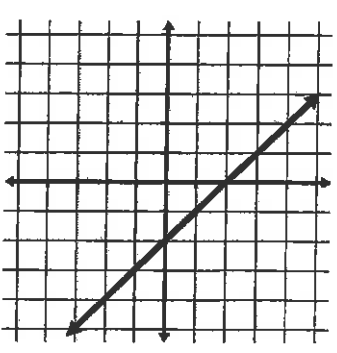
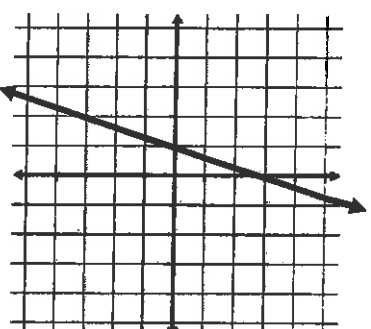
$$\text{Slope} = \frac{\quad}{\quad} = \frac{\quad}{\quad}$$

If the equation has y by itself, the slope is the number in front of x . If y is not by itself, rearrange the equation first to get y by itself.

$$Y = mX + b$$

Use arrows on the sides of the table to determine how the y and x values are changing

$$\text{Slope} = \frac{\quad}{\quad}$$



$$Y = -X + 2$$

$$5X - 2Y = 30$$

X	Y
-3	0
3	1
6	2
9	3

X	Y
12	-7
8	-3
4	1
0	5

Remove This Flap

**From a
Graph**

**From an
Equation**

**From a
Table**